

Figure 1.1: Existing Network and Points of connection

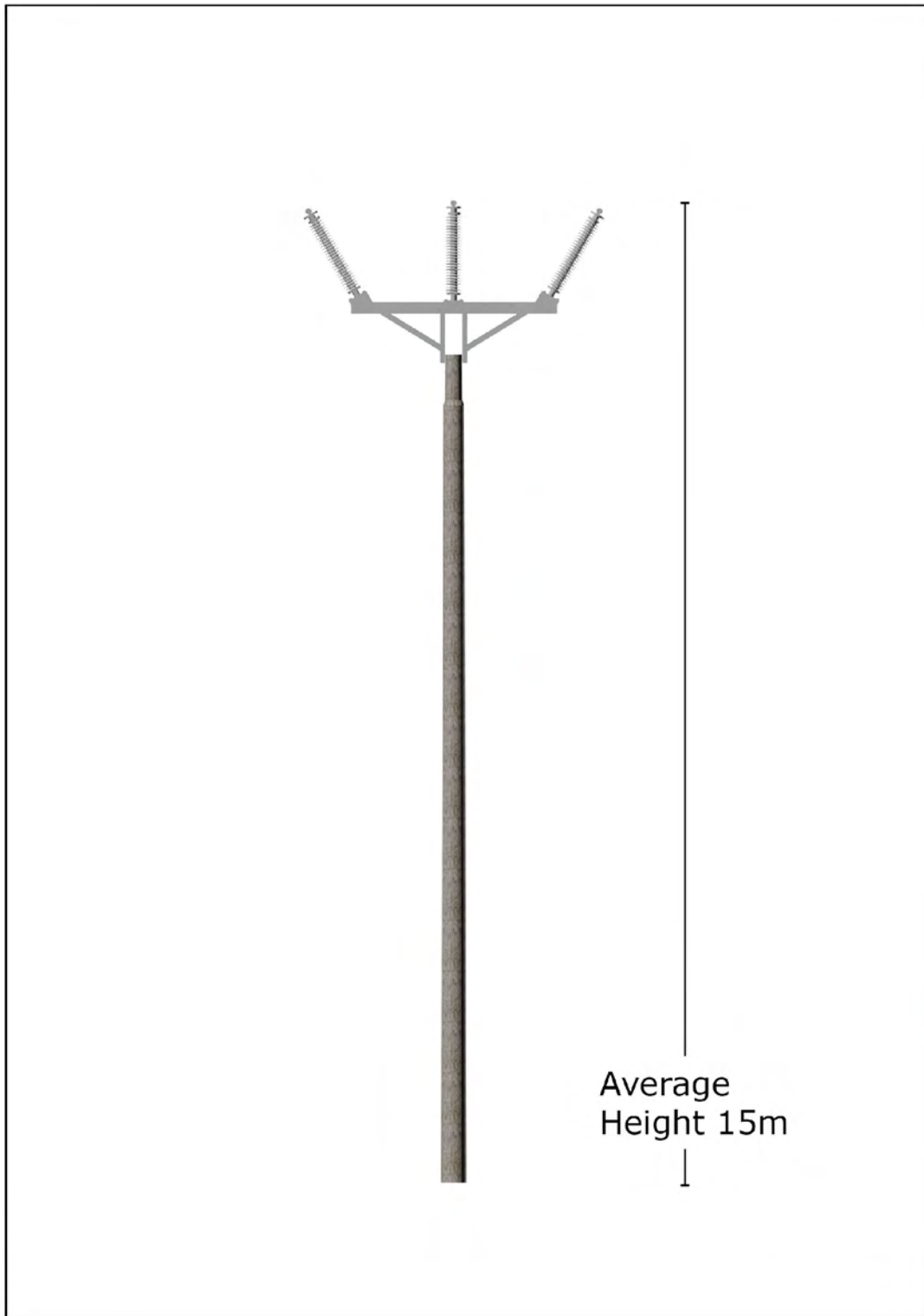
- Substation
- 132kV overhead lines
- 400kV overhead lines



Map Scale: 1:50,000 @ A3



Figure 2.1: Typical Wood Pole
Type

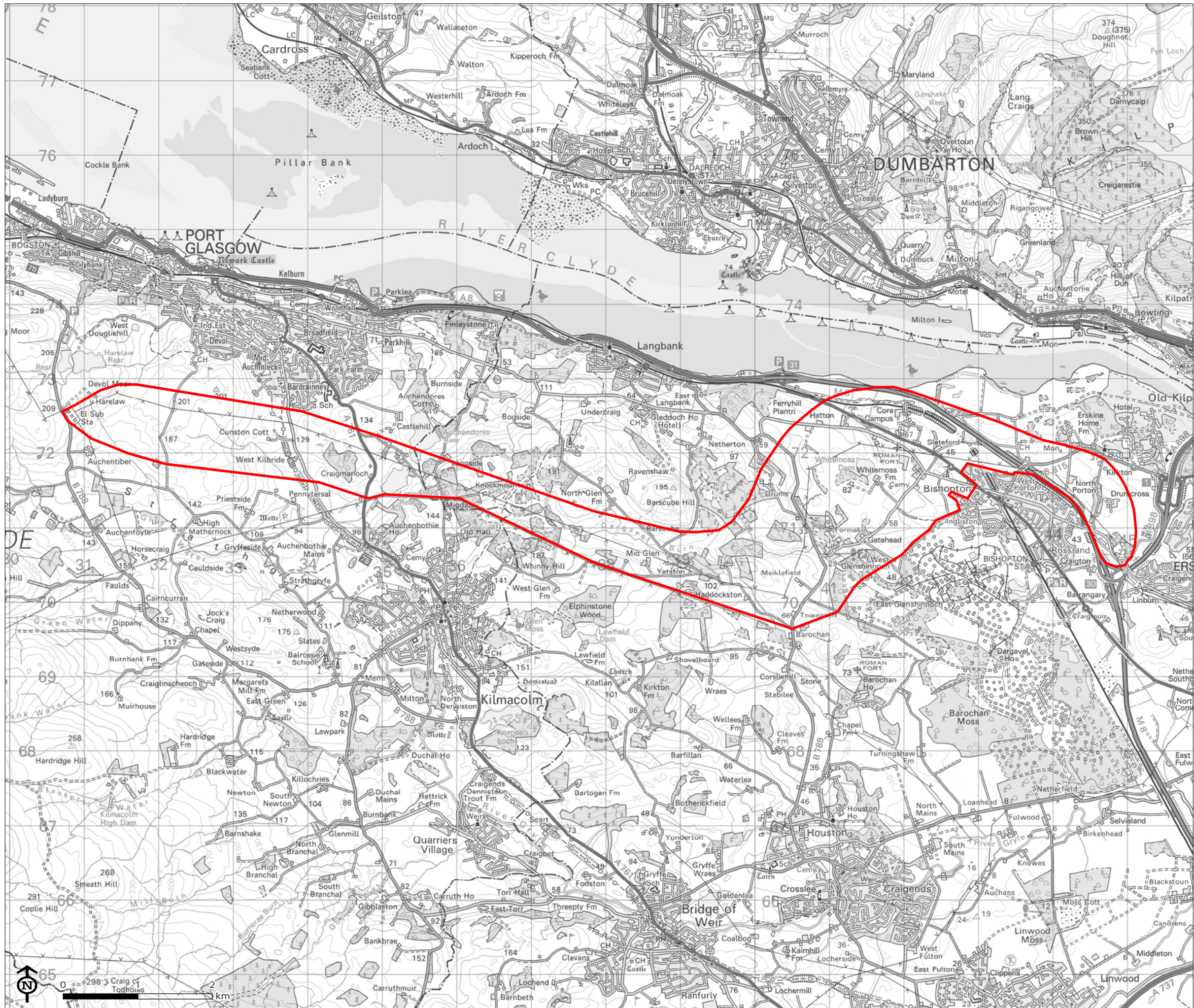


132kV 'Trident' design Wood Pole



Figure 4.1: Study Area

 Study Area

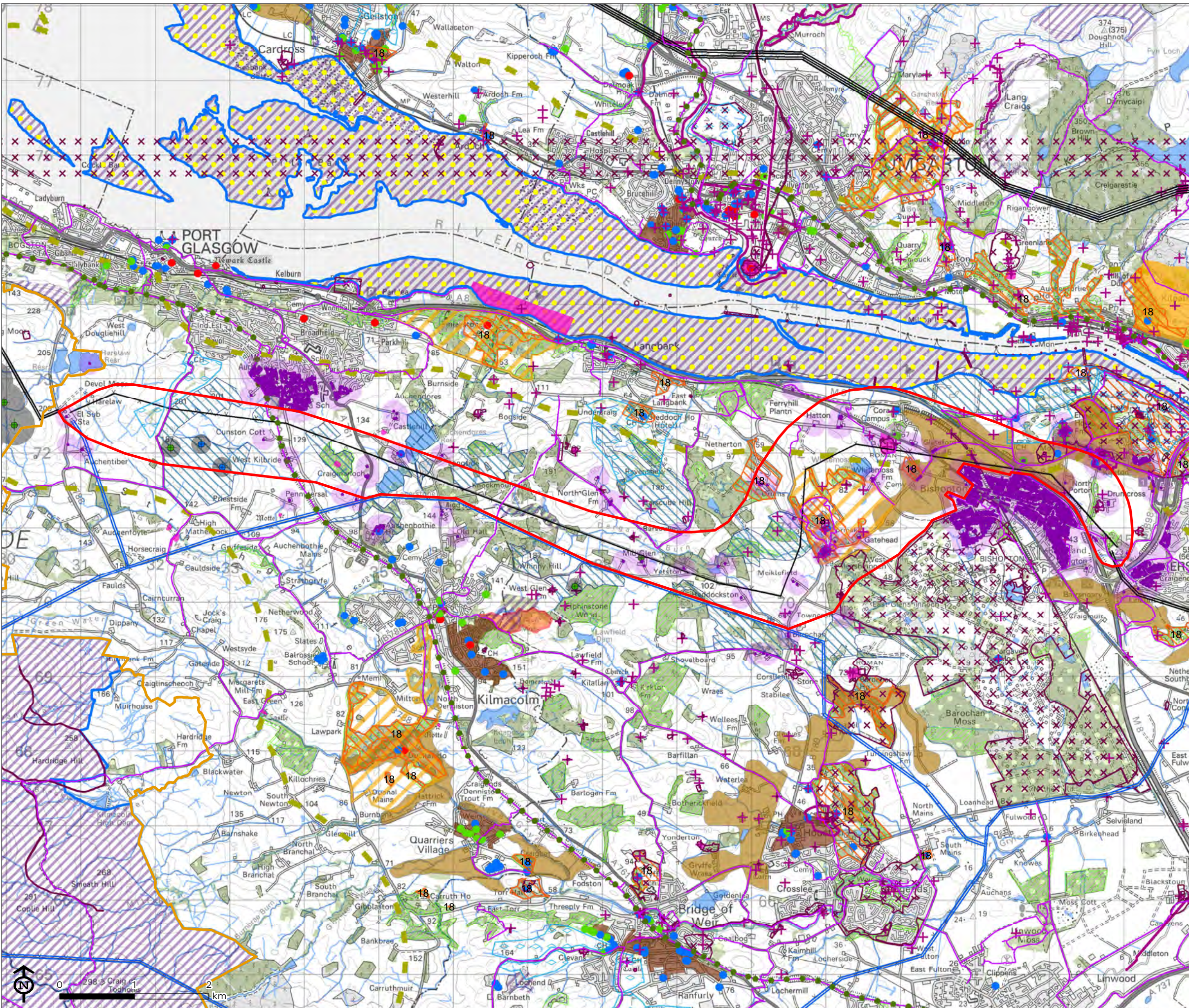


Map Scale: 1:50,000 @ A3



Erskine to Devol Moor Routing and Consultation Report

Figure 4.2: Environmental Considerations



- Study Area
- Properties and Recreation**

 - Residential Property
 - Residential Property 150m Trigger for Consideration
 - Clyde Muirshiel Regional Park
 - Sustrans National Cycle Route
 - Core Path
 - Golf course

- Infrastructure**

 - 132kV overhead lines
 - 400kV overhead lines
 - + Wind Turbine - Operational
 - + Wind Turbine - Consented
 - 3x Wind Turbine Rotor Diameter

- Cultural Heritage**

 - Listed Building - Category A
 - Listed Building - Category B
 - Listed Building - Category C
 - World Heritage Site
 - Scheduled Monument
 - Garden and Designed Landscape
 - Conservation Area
 - Non - Inventory Garden and Designed Landscape
 - Canmore
 - + Historic Environment Record - Point
 - Historic Environment Record - Linear
 - Historic Environment Record - Polygon

- Biodiversity**

 - Special Protection Area (SPA)
 - Ramsar
 - Site of Special Scientific Interest (SSSI)
 - Site of Importance for Nature Conservation
 - Scottish Wildlife Trust (SWT) Reserve
 - Sensitive Bird Area 'trigger for consideration'

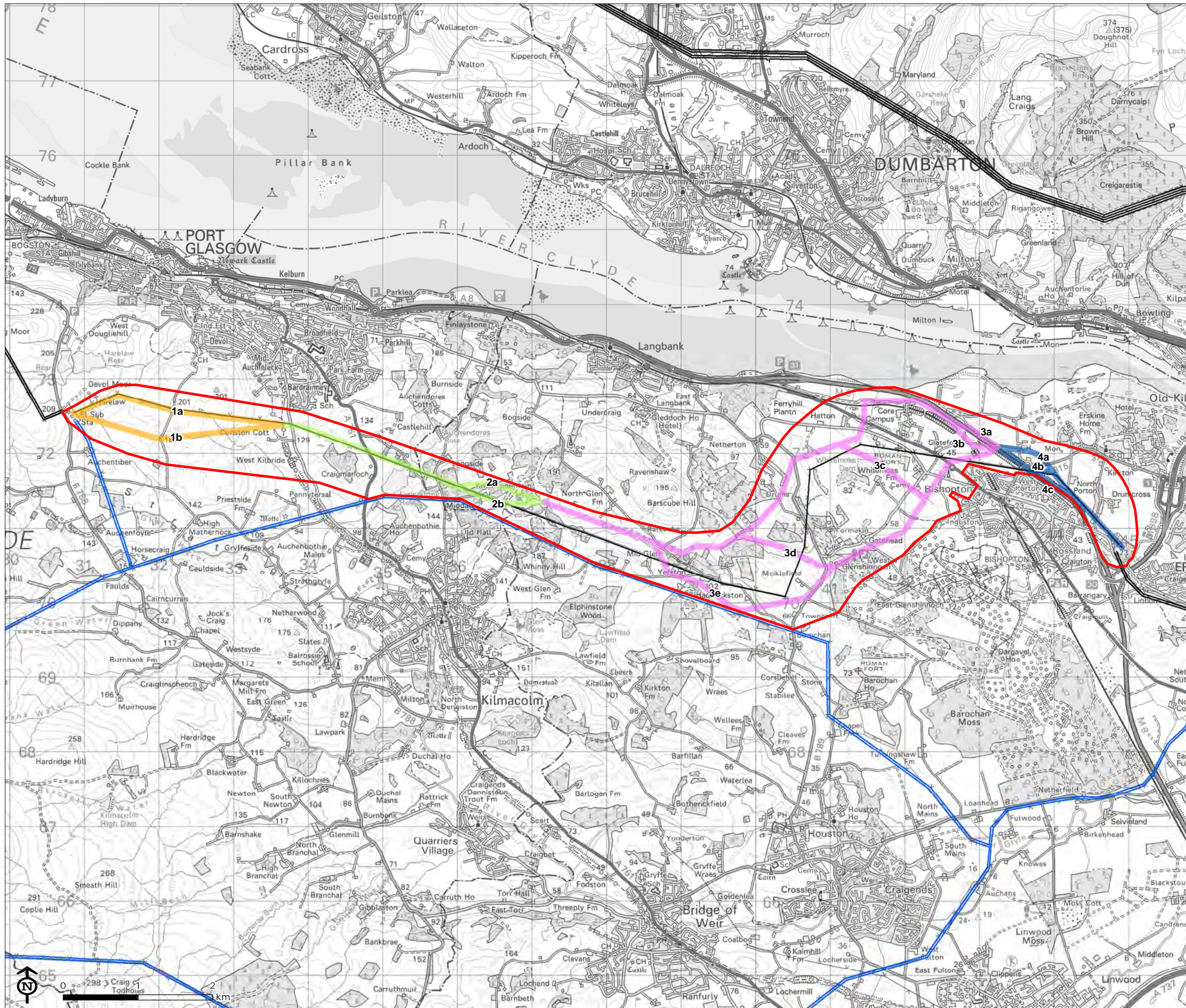
- Landuse**

 - Land Capability for Agriculture - Class 3.1
 - Ancient Woodland Inventory (AWI)
 - Native Woodland Survey of Scotland (NWSS)
 - National Forest Inventory (NFI) 2015
 - Surface Water

Map Scale: 1:50,000 @ A3



Figure 4.3: Route Options

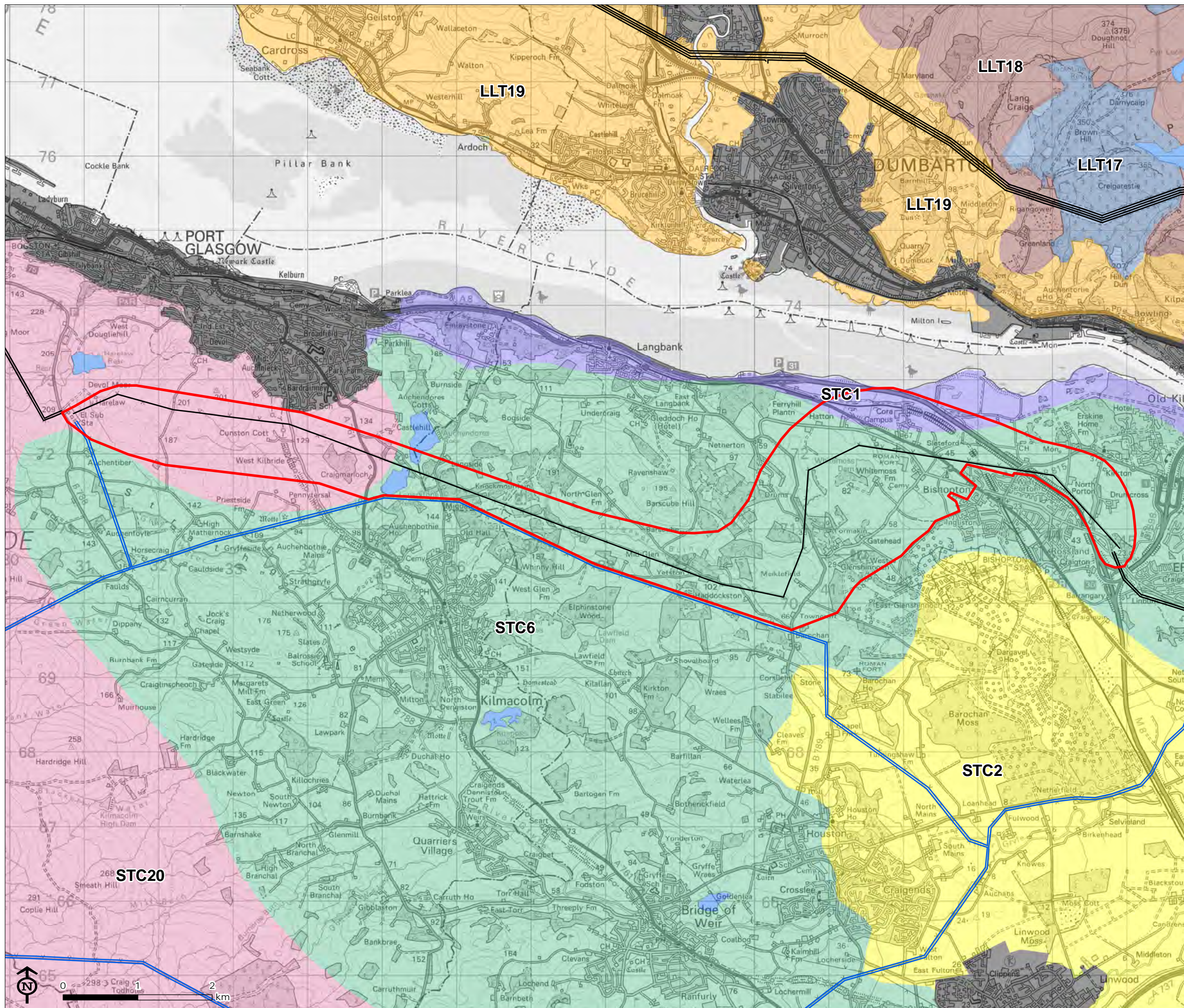


- Study Area
- 132kV overhead lines
- 400kV overhead lines
- Route Options
- Section 1
- Section 2
- Section 3
- Section 4

Map Scale: 1:50,000 @ A3



Figure 5.1: SNH Regional Landscape Character Types



- Study Area
- 132kV overhead lines
- 400kV overhead lines
- SNH Regional Landscape Types
- LLT17. Forested Moorland Hills
- LLT18. Farmed Moorland Hills
- LLT19. Rolling Farmland
- STC1. Raised Beach
- STC2. Floodplain
- STC6. Rugged Upland Farmland
- STC20. Rugged Moorland Hills
- Inland Loch
- Urban

Map Scale: 1:50,000 @ A3

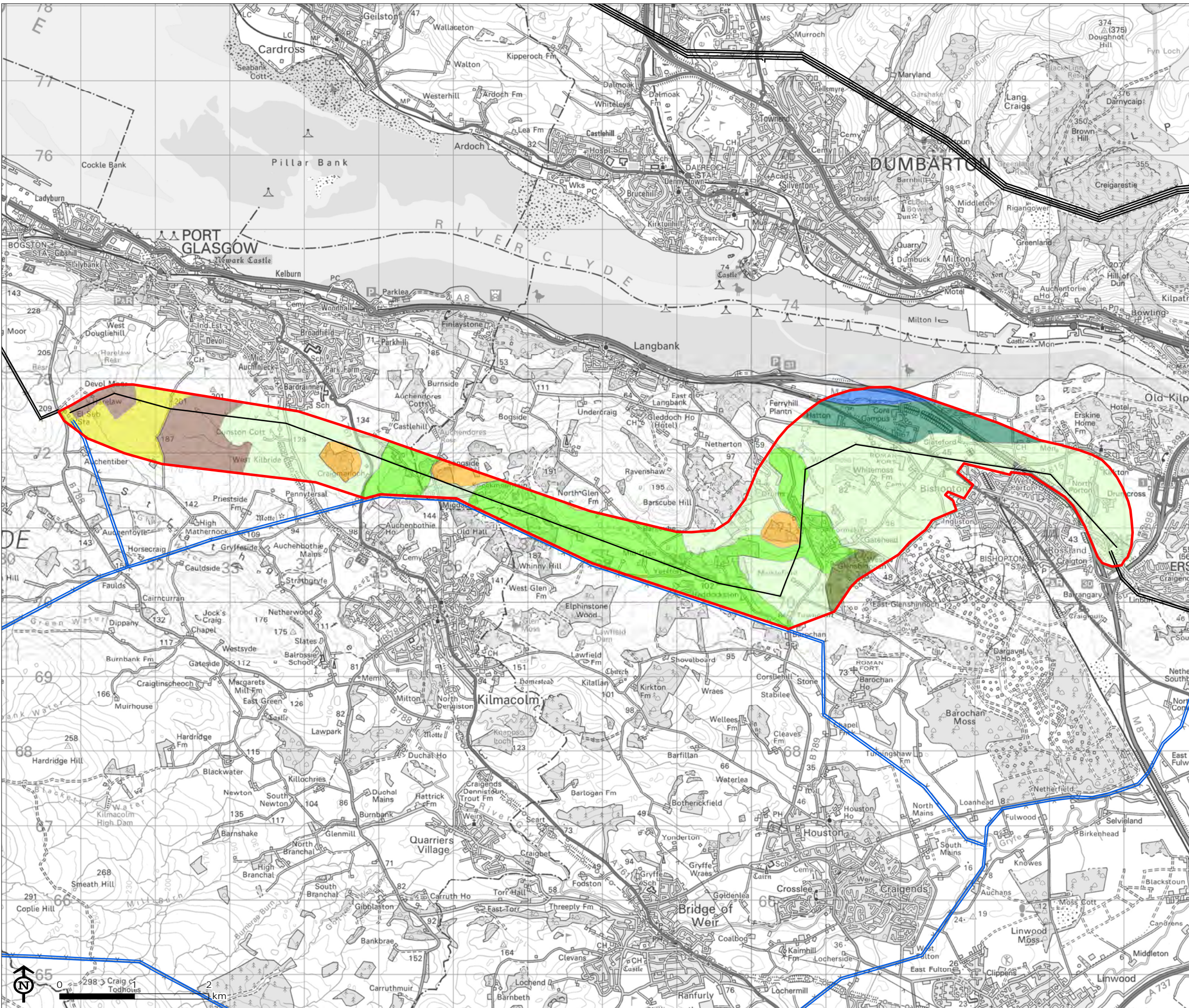


Erskine to Devol Moor Routing and Consultation Report

Figure 5.2: Local Landscape Character Types

- Study Area
 - 132kV overhead lines
 - 400kV overhead lines
- Local Landscape Character Types and Areas*
- Escarpment
 - Raised Beach
 - Rolling Pastureland
 - Rocky Hills & Ridges
 - Pastoral Valleys
 - Improved Upland Pasture
 - Forestry
 - Moorland

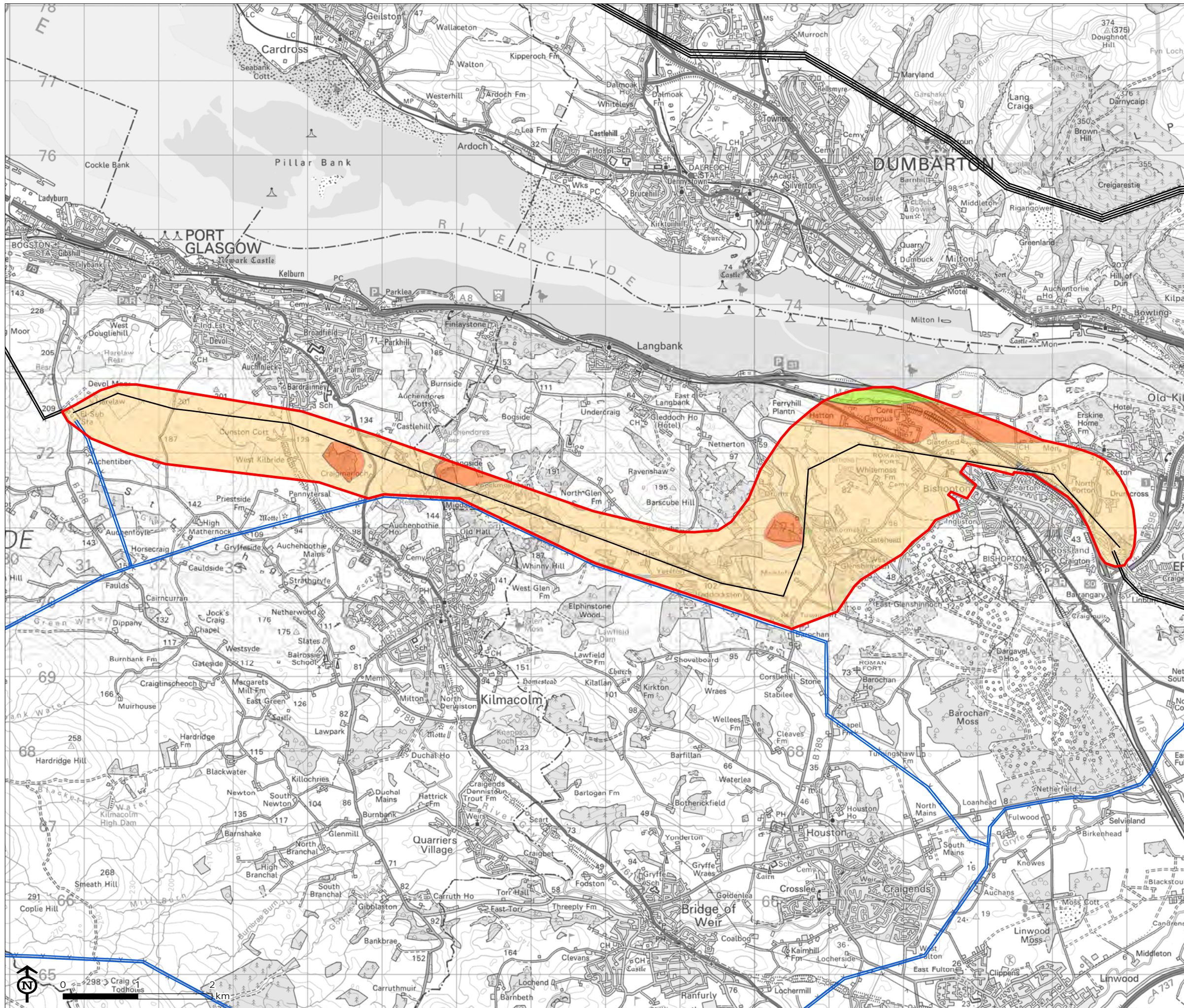
* Note:
Indicative areas digitised from Figure 6
Local Landscape Character Areas. Erskine
Substation to Devol Moor Substation 132kV
Overhead Line Public Consultation
Document November 2010



Map Scale: 1:50,000 @ A3



Figure 5.3: Local Landscape Character Types and Sensitivity



- Study Area
 - 132kV overhead lines
 - 400kV overhead lines
- Local Landscape Character Types and Areas*
Sensitivity
- High
 - Medium
 - Low

* Note:
Indicative areas digitised from Figure 6
Local Landscape Character Areas. Erskine
Substation to Devol Moor 132kV
Overhead Line Public Consultation
Document November 2010

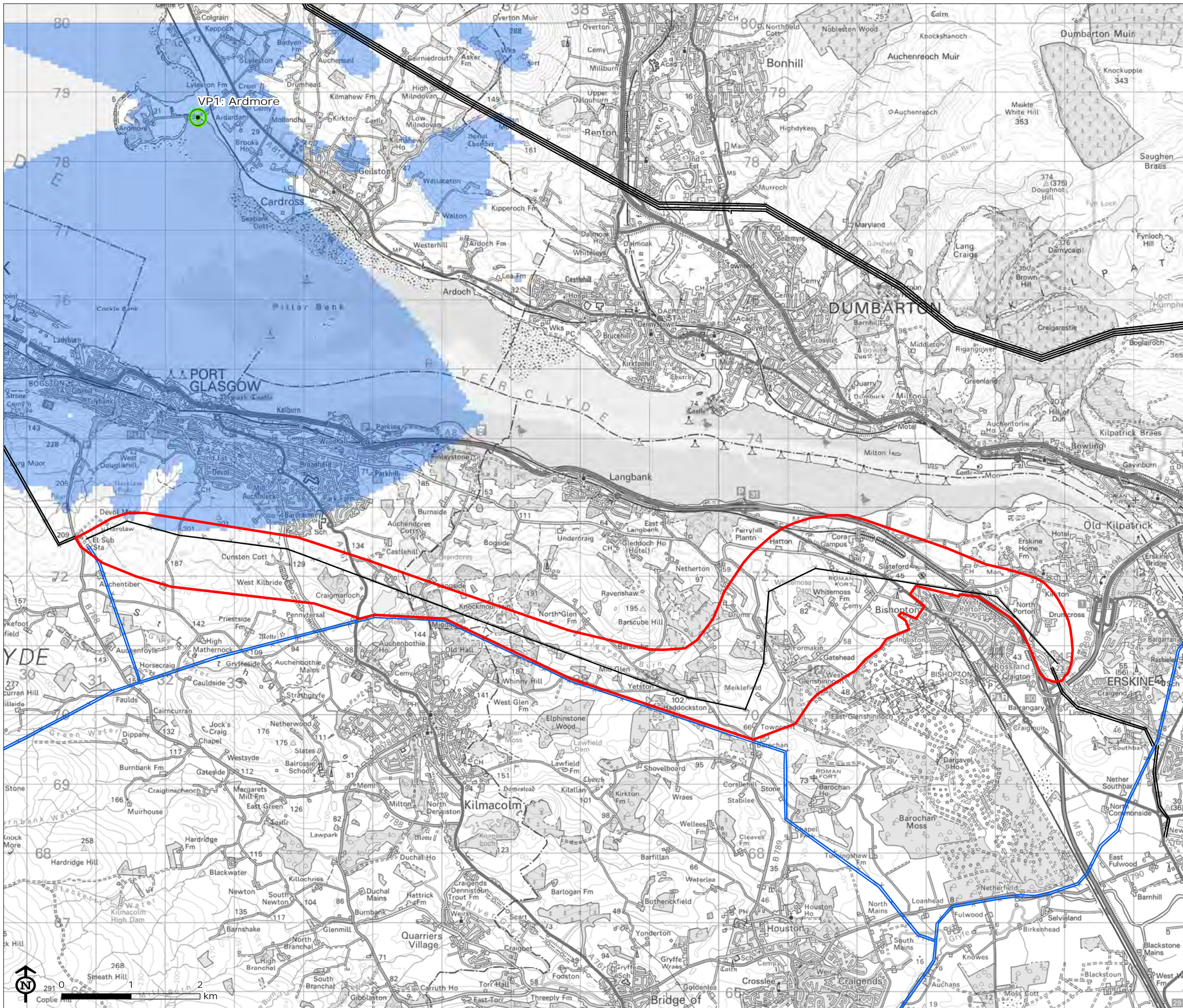
Map Scale: 1:50,000 @ A3



Erskine to Devol Moor
Routing and Consultation
Report

Figure 5.4a: Visibility from Viewpoints along the Clyde

Viewpoint 1: Ardmore



- Study Area
- 132kV overhead lines
- 400kV overhead lines
- Viewpoint
- Visibility of Objects up to 15m

Map Scale: 1:53,853 @ A3

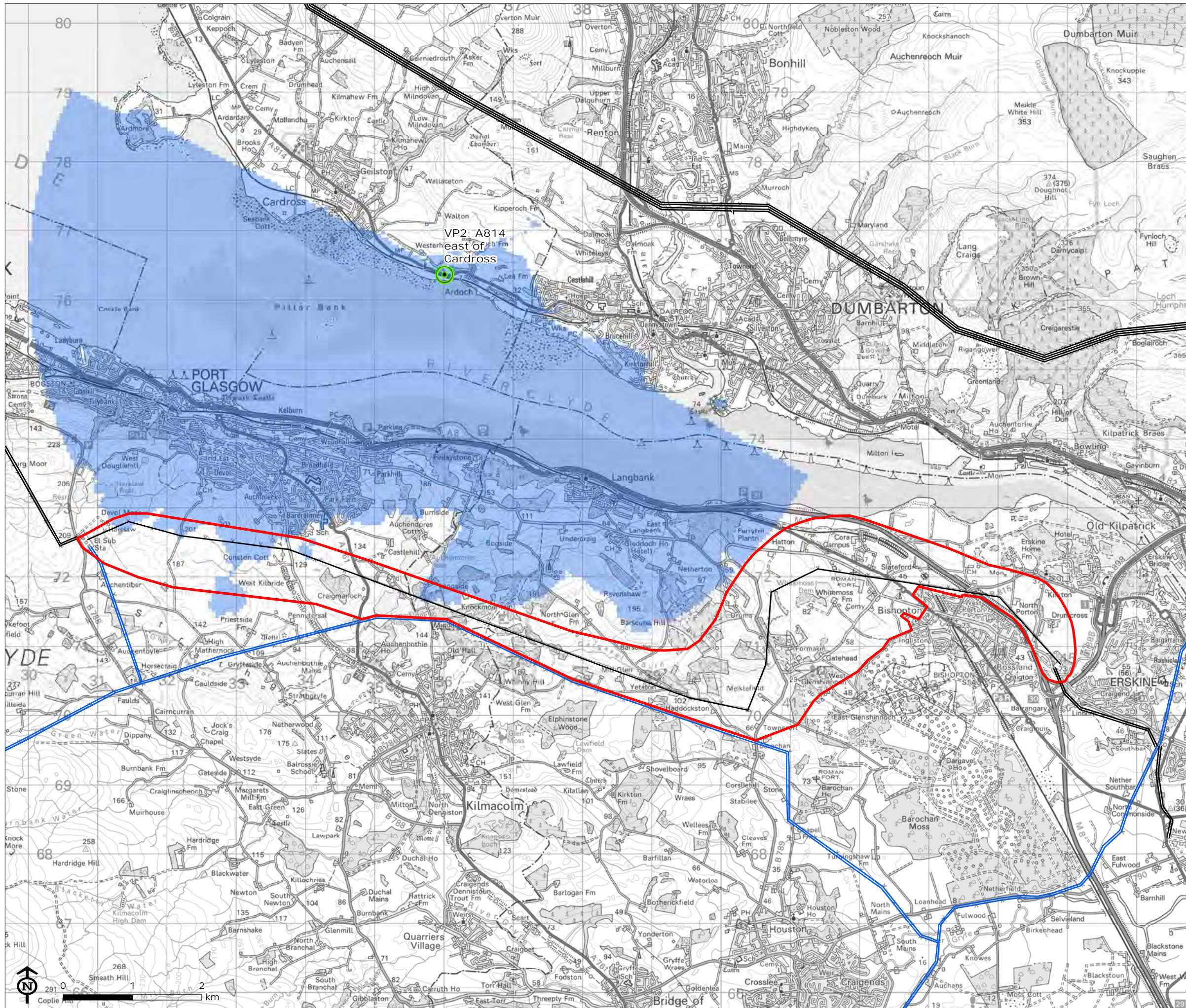


Erskine to Devol Moor
Routing and Consultation
Report

Figure 5.4b: Visibility from Viewpoints along the Clyde

Viewpoint 2: A814 east of Cardross

- Study Area
- 132kV overhead lines
- 400kV overhead lines
- Viewpoint
- Visibility of Objects up to 15m

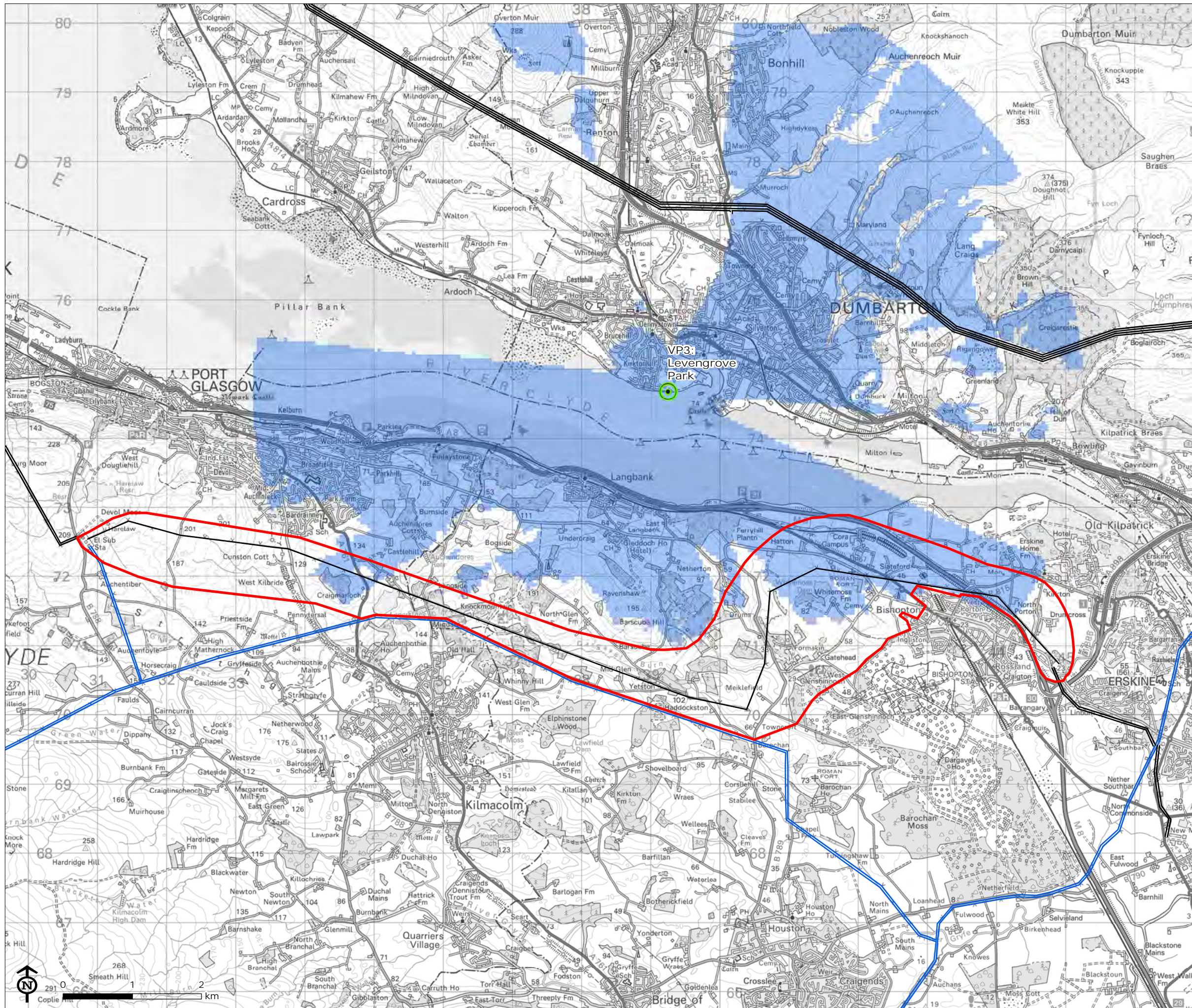


Map Scale: 1:53,853 @ A3



Erskine to Devol Moor
Routing and Consultation
Report

Figure 5.4c: Visibility from
Viewpoints along the Clyde
Viewpoint 3: Levensgrove Park



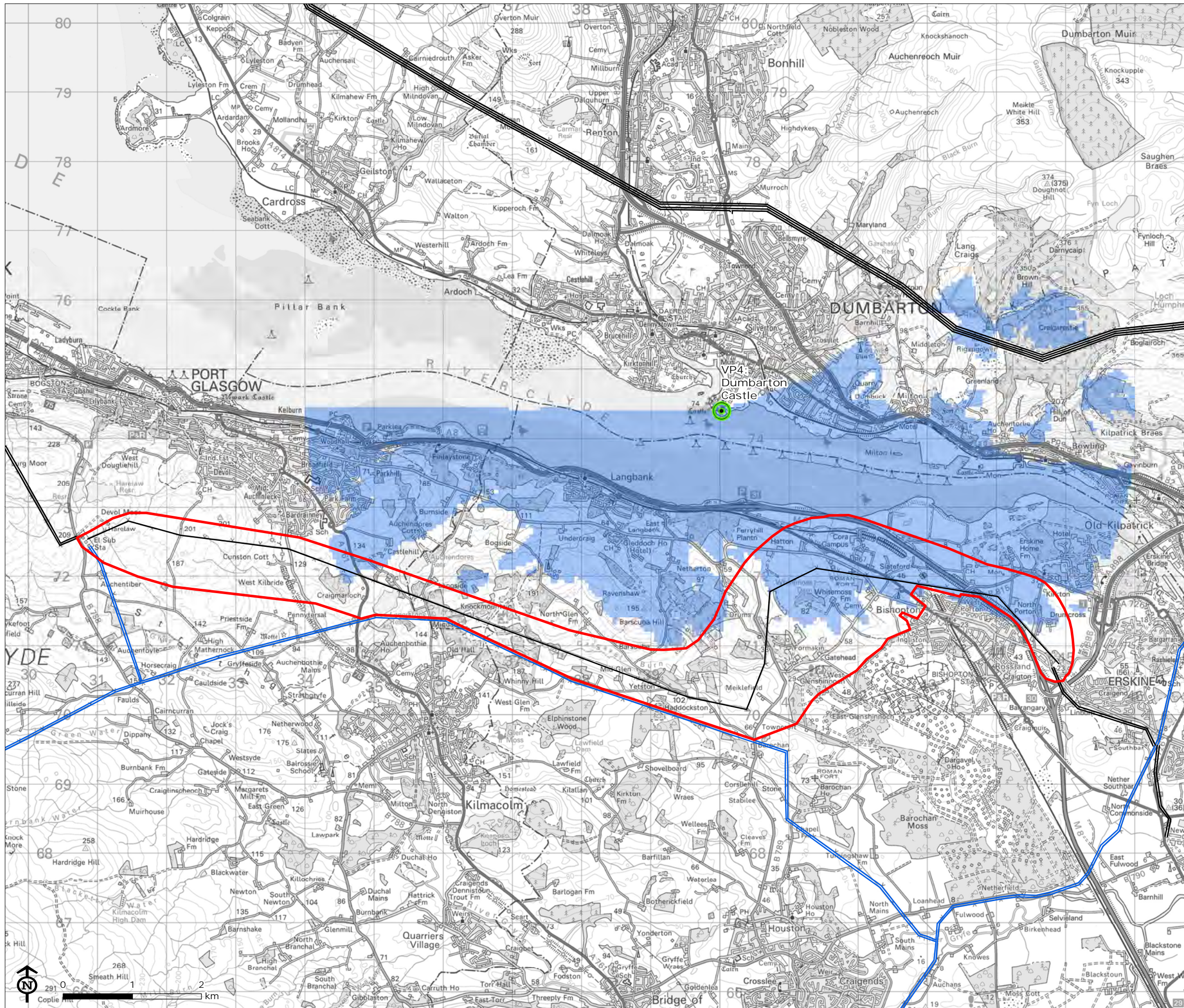
- Study Area
- 132kV overhead lines
- 400kV overhead lines
- Viewpoint
- Visibility of Objects up to 15m

Map Scale: 1:53,853 @ A3



Erskine to Devol Moor
Routing and Consultation
Report

Figure 5.4d: Visibility from
Viewpoints along the Clyde
Viewpoint 4: Dumbarton Castle



- Study Area
- 132kV overhead lines
- 400kV overhead lines
- Viewpoint
- Visibility of Objects up to 15m

Map Scale: 1:53,853 @ A3

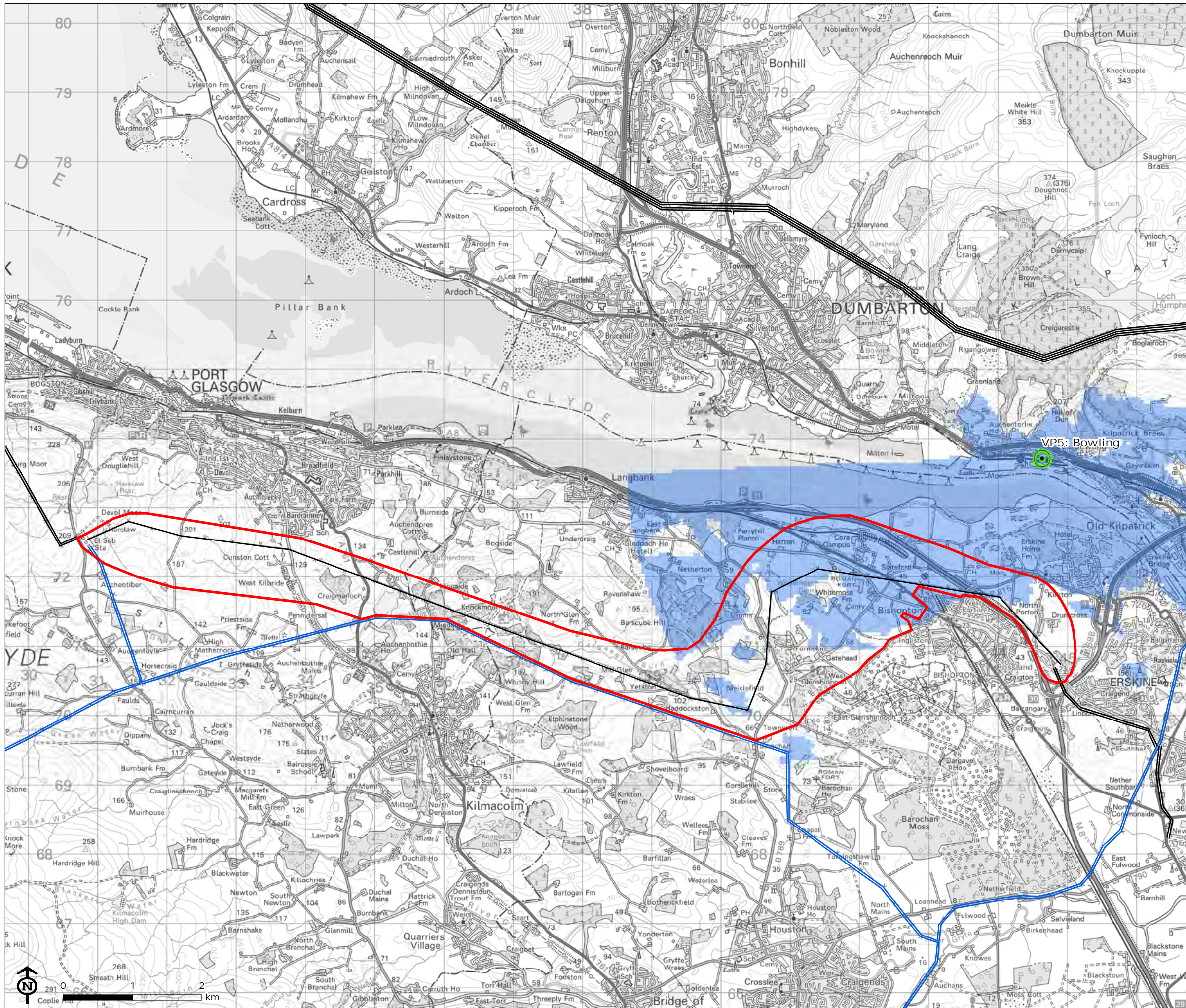


Erskine to Devol Moor
Routing and Consultation
Report

Figure 5.4e: Visibility from Viewpoints along the Clyde

Viewpoint 5: Bowling

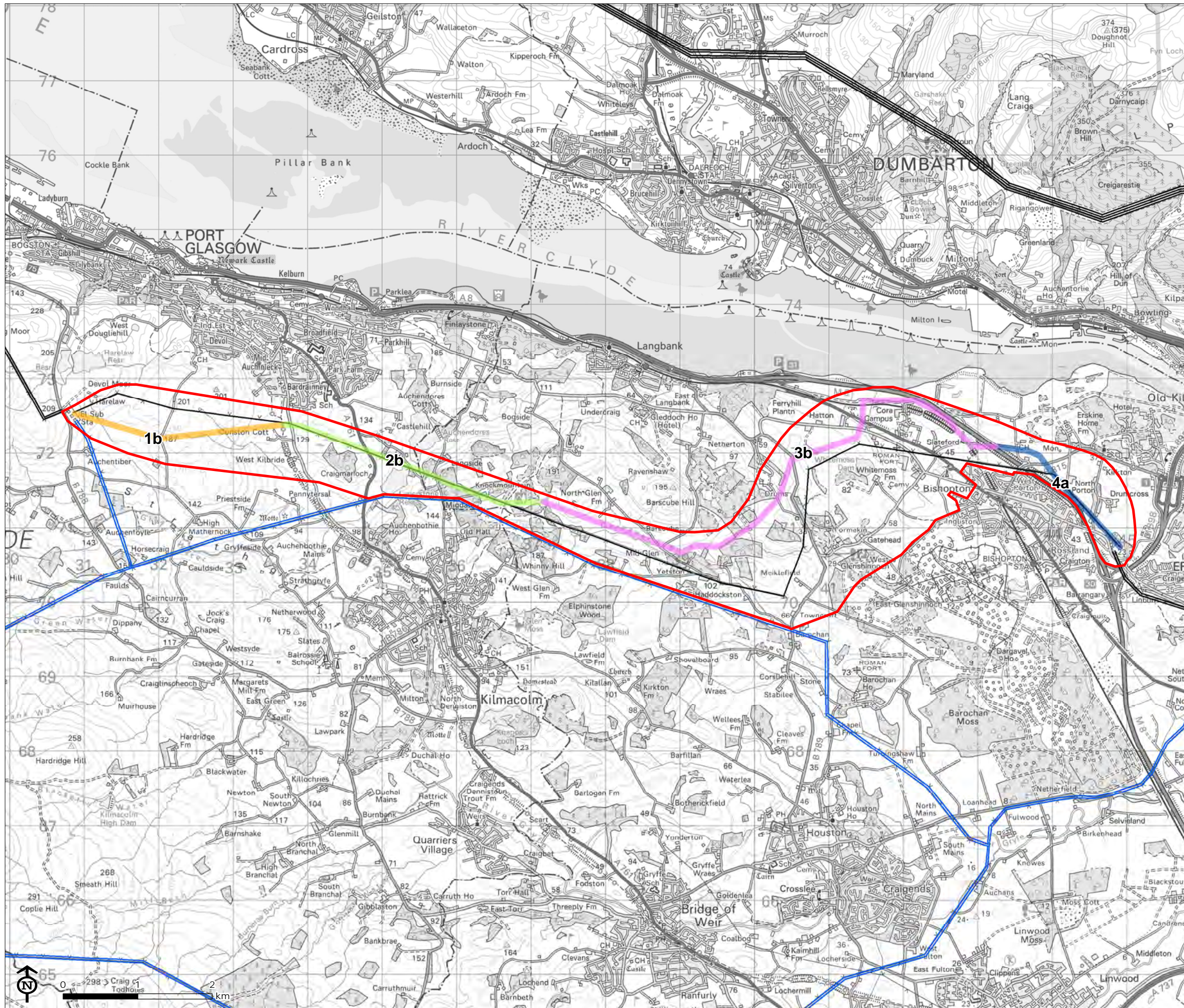
- Study Area
- 132kV overhead lines
- 400kV overhead lines
- Viewpoint
- Visibility of Objects up to 15m



Map Scale: 1:53,853 @ A3



Figure 6.1: Preferred Route



- Study Area
 - 132kV overhead lines
 - 400kV overhead lines
- Preferred Route
- Section 1
 - Section 2
 - Section 3
 - Section 4

Map Scale: 1:50,000 @ A3

